

# Stresa 280 Table

Design Piero Lissoni

Technical Information



STRESA is the new living and dining collection in powder coated aluminium, designed by Piero Lissoni. A timelessly charming line, designed to easily fit into various contexts, both domestic and contract. The name recalls the timeless elegance of Stresa, the pearl of Lake Maggiore, with its period villas and perfectly preserved Art Nouveau architecture. STRESA is available in various outdoor furniture elements for a complete and coordinated proposal, ranging from living to dining, with a two or three-seater sofa, a rectangular table in two sizes, poufs and coffee tables, armchairs with armrests for dining and living.

## TECHNICAL INFORMATION

### DESCRIPTION

Table for outdoor use.

### STRUCTURE

Powder coated aluminium.

### TOP

Gres or wavy glass.

### WEIGHT

Structure + gres top	70 kg
Structure + wavy glass top	93 kg

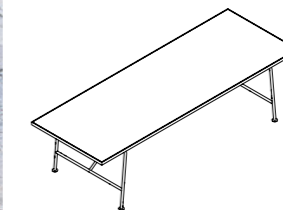
### STORAGE COVER

Available.

### DIMENSION

L 280 × P 100 × H 74 cm

W 110"  $\frac{1}{4}$  × D 39"  $\frac{3}{8}$  × H 29"  $\frac{1}{8}$



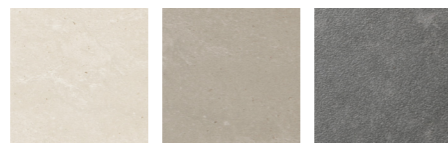
## Materials

### METAL



Smoke

### TOP / GRES

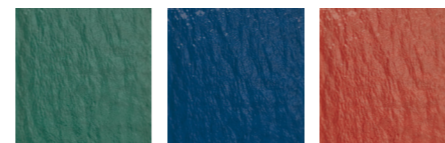


Sand

Mole

Lead

### TOP / WAVY GLASS



Fern

Navy

Paprika